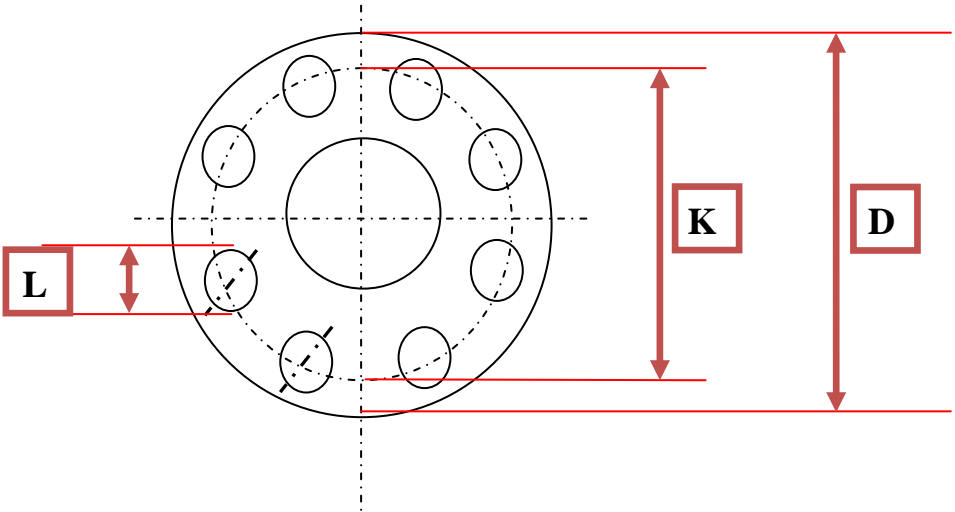
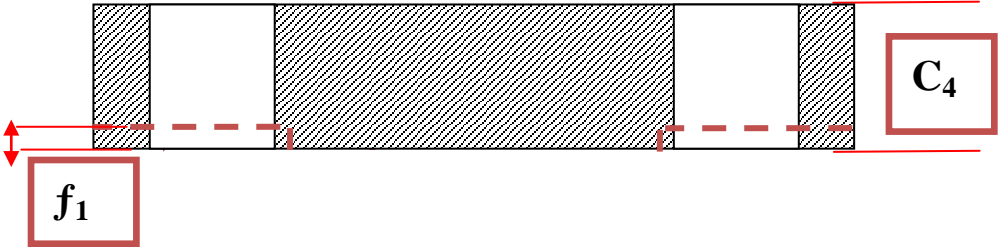


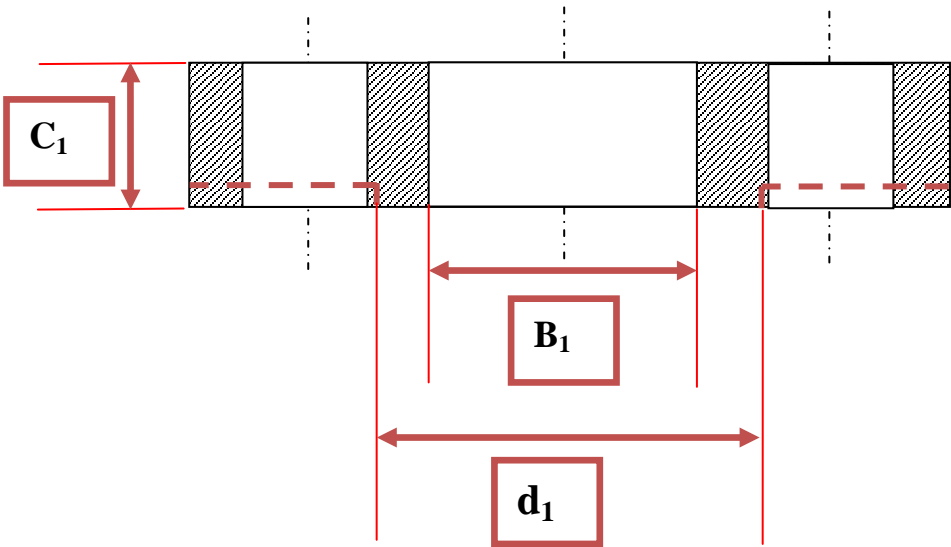
Flange PN-40 Dimensions ISO-7005-1



TYPE 05 – BLIND



TYPE 01-SLIP ON



**MARKING ACC ISO-7005-1/EN1092-1:**

STANDARD(ISO7005/EN1092-1) , SIZE(IN INCH) , PN40 , MATERIAL ,  
MANUFACTURER NAME OR BRAND , HEAT No, TYPE OR KIND( SO,BLIND).

SIZE (inch)	DN SIZE (mm)	MATCHING DIMENSIONS					BORE DIM (B <sub>1</sub> )	FLANGE THICKNESS		FACING DIM d <sub>1</sub>	RF DIM f <sub>1</sub>	TOLERANCES				
		(D)	(K)	(L)	BOLTS			C <sub>1</sub>	C <sub>4</sub>			B <sub>1</sub>	C <sub>1</sub>	d <sub>1</sub>	f <sub>1</sub>	K
					No.	Size nominal										
3/8	10	90	60	14	4	M12	18	14	16	40	2	+0.5	-1.5	-1 / +2	-1	±1
1/2	15	95	65	14	4	M12	22	14	16	45	2	+0.5	-1.5	-1 / +2	-1	±1
3/4	20	105	75	14	4	M12	27.5	16	18	58	2	+0.5	-1.5	-1 / +2	-1	±1
1	25	115	85	14	4	M12	34.5	16	18	68	2	+0.5	-1.5	-1 / +2	-1	±1
1-1/4	32	140	100	18	4	M16	43.5	18	18	78	2	+0.5	-1.5	-1 / +2	-1	±1
1-1/2	40	150	110	18	4	M16	49.5	18	18	88	3	+0.5	-1.5	-1 / +2	-2	±1
2	50	165	125	18	4	M16	61.5	20	20	102	3	+0.5	-1.5	-1 / +2	-2	±1
2-1/2	65	185	145	18	8	M16	77.5	22	22	122	3	+0.5	-1.5	-1 / +2	-2	±1
3	80	200	160	18	8	M16	90.5	24	24	138	3	+0.5	-1.5	-1 / +2	-2	±1
4	100	235	190	22	8	M20	116	26	24	162	3	+0.5	-1.5	-1 / +2	-2	±1
5	125	270	220	26	8	M24	141.5	28	26	188	3	+1	-1.5	-1 / +2	-2	±1
6	150	300	250	26	8	M24	170.5	30	28	218	3	+1	-1.5	-1 / +2	-2	±1
8	200	375	320	30	12	M27	221.5	36	36	285	3	+1	-1.5	-1 / +2	-2	±1.5
10	250	450	385	33	12	M30	276.5	42	38	345	3	+1	-1.5	-1 / +2	-2	±1.5
12	300	515	450	33	16	M30	327.5	52	42	410	4	+1	-2	-1 / +3	-3	±1.5
14	350	580	510	36	16	M33	359.5	58	46	465	4	+1	-2	-1 / +3	-3	±1.5
16	400	660	585	39	16	M36	411	65	50	535	4	+1	-2	-1 / +3	-3	±1.5
18	450	685	610	39	20	M36	462	66	57	560	4	+1.5	-2	-1 / +3	-3	±1.5
20	500	755	670	42	20	M39	513.5	72	57	615	4	+1.5	-2	-1 / +3	-3	±1.5
24	600	890	795	48	20	M45	616.5	84	72	735	5	+3	-2	-1 / +3	-4	±1.5
28	700	995	900	48	24	M45	717.5	88	72	840	5	+3	-2	-1 / +3	-4	±1.5
32	800	1140	1030	56	24	M52	819	98	76	960	5	+3	-2	-1 / +3	-4	±1.5
36	900	1250	1140	56	28	M52	921	101	82	1070	5	+3	-2	-1 / +3	-4	±1.5
40	1000	1360	1250	56	28	M52	1022.5	116	85	1180	5	+3	-2	-1 / +3	-4	±1.5



**Mendelson – S.Bar Ltd.**

E-Mail: info@mlsbar.com Web Site: www.mlsbar.co.il



*[ ALL SIZES ARE IN MM ] AVAILABLE UP TO 3600 MM [ 142" ]*

---

EXAMPLE OF MARKING-SLIP ON 3"

*ISO7005/EN1092-1, 3" , PN40, material , MANUFACTURER NAME OR BRAND , HEAT No, TYPE 01 S.O*

EXAMPLE OF MARKING-BLIND 3"

*ISO7005/EN1092-1, 3" , PN40 , material, MANUFACTURER NAME OR BRAND , HEAT No, TYPE 05 BLIND*